

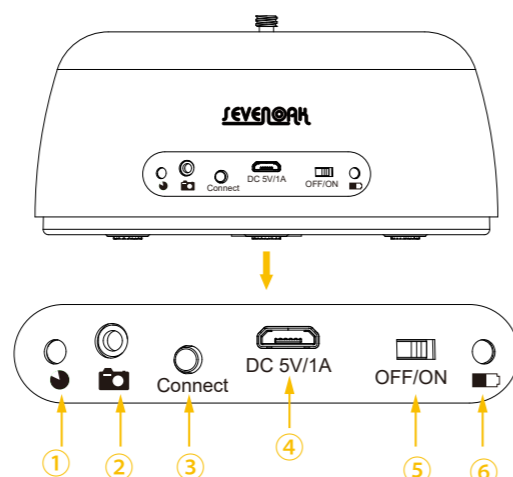


SK-EBH04 Time Lapse Ball Head

© 2017 Sevenoak Inc. Visit us on the web at www.sevenoak.biz

Components:

- Working LED indicator
- Camera shutter release cable connecting port
- Connecting button
- Micro USB charge port
- On/off switch
- Charging indicator

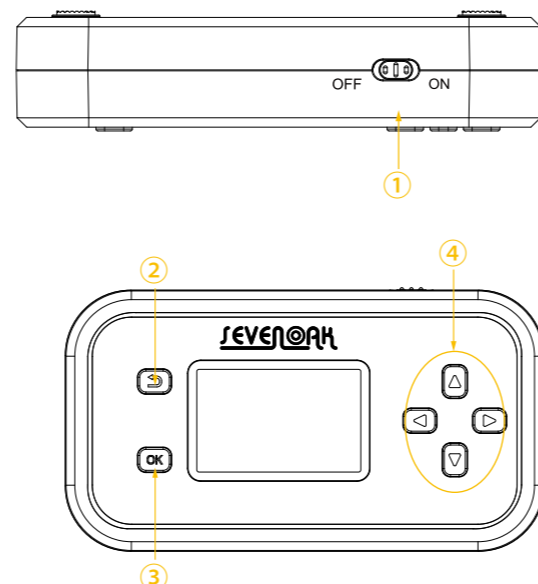


Specifications:

- Working current: 200mA
 - Battery capacity: 7.2V/1200mAh
 - Charging voltage: DC 5V/1A
 - Charging time: 8 hours
 - Working time: 5 hours (with 2.5kg load capacity)
- Working LED indicator status:
- LED indicator on: the device is on and ready to start
 - LED indicator blink for 2 seconds: The device is under time lapse mode and live motion mode
 - LED indicator blink for 0.5 second: the battery is low

Function buttons on the remote control

- On/off switch
- Return button
- OK/confirm button
- Left/right/up/down button (for setting parameter)



Specifications about remote control:

- Power supply: two AAA battery
- Working hour: 25 hours
- Effective working range: 20 meters
- Radio frequency: 2.4G

Remote control parameter:

Menu on the remote control:

- Camera set: set the camera related parameter
- Motor set: set the motor related parameter
- Time lapse: set the time lapse mode parameter
- Live motion: set the live motion mode parameters

Camera set:

- Focus time: allow to enter the range from 0S,1/8S, 1/4S.....20S.
- Exposing time: allow to enter the range from 0S,1/8S, 1/4S.....20S.

Motor set:

DIR: CW/CCW

For motor set, it can only set the rotate direction of the device.

DIR CW: Rotate clockwise

DIR CCW: Rotate counter-clockwise

Time lapse:

- Degree: set the rotate angle, setting range: 5-360 degree (when it shows "--", it means the device will rotate 360 degree endlessly).
- Time: set total working time, the range is from 1Min to 2H 46Min.
- Int: set the interval time, "min" range is 0-99 mins, "sec" range is from 0-99 secs.

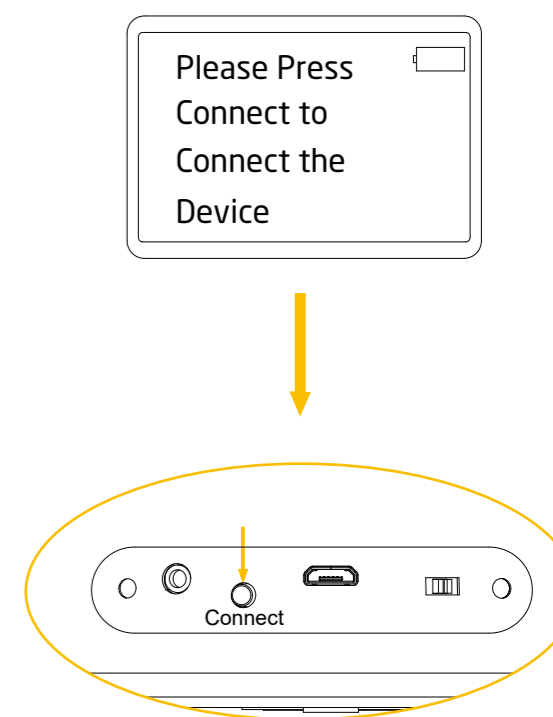
Live motion:

- Degree: set the rotate angle, the range is: 5-360 degree (when it shows "--", it means the device will rotate 360 degree endlessly).
- Speed: set the motor speed, the range is from 1-9, 1 is the fastest speed, 9 is the lowest speed.

Setting/Start to use

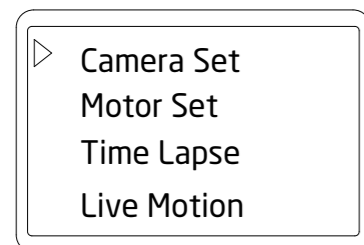
Step 1. Turn on the device and remote control

Turn on the remote control and device (with working LED indicator is on), then the LCD screen on the remote control shows the following information, follow this information and press the "Connect" button on the device to contact device and remote control.



Step 2. Camera Set

1. When the remote control and device is successfully connected, the LCD screen on the remote control shows the following information, you can select the following contents and set the parameter according to your desire.

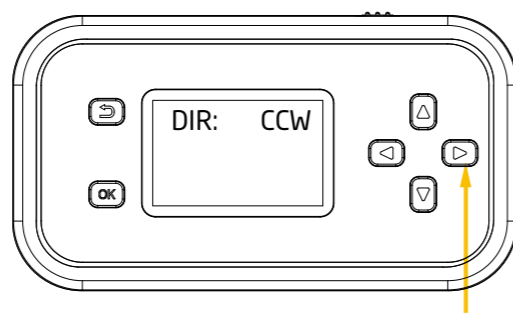
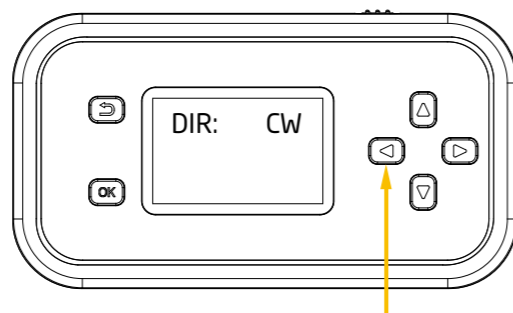


2. Entering into "Camera Set", the LCD screen on the remote control shows the following information, you can set the focus time and exposing time at your desire, when the parameter is settled, press "OK" to save the parameter, after that, press "OK" again, the device is ready to start according to the parameter just settled. At this step, the working LED indicator is blinking, and the device is not turning yet, finish the following settings to start the device.

FocusTime: 1S
ExposingTime: 1S

Step 3: Motor Set

Entering into the motor set, the LCD screen on the remote control shows the following information, press "right" button on the remote control to change the rotating direction to counter-clockwise. Press "left" button on the remote control to change the rotating direction to clockwise. When the parameter is ok, press "OK" to save the setting, and press "return" button to go to next content.



Step 4: Time lapse mode set

1. Entering into the time lapse set, the LCD screen shows below information, press up/down button to select the parameter you want to change, and press left/right button to increase/decrease the parameter, then press "OK" button to save the parameter.

Degree: 360°
Time: 0H 1Min
Int: 0H 1Sec

2. Press "OK" again, the LCD screen will show below information, and the device will start to rotating according to the parameter just settled. If you want to stop, press "OK" again, then press "return" button to return to the main menu.

Total Shot: 0060
Current Shot: 0000
Start

Note: When the device have finished shooting according to the settings, when press OK to start again as the previous settings, the total shot numbers will not reset, the number of shots will increase based on the shots that have been taken already.

Step 5: Live motion mode set

Entering into the live motion mode, the LCD screen shows the following information, press up/down button to select the parameter you want to change, and press left/right button to increase/decrease the parameter, then press "OK" to save the parameter. Press "OK" again, the device will start to work according to the parameter just settled. If you want to stop, press "OK" again, then press "return" button to return to the main menu.

Degree: 360°
Speed: 1
Start



When the remote control and device is powered off, it will not save the settings automatically, it will reset to defaults.

Notice:

- When finished shooting, please turn off the device and remote control.
- When the working LED indicator is blinking, it means the battery is low and need to recharge.
- To protect the motor and device, do not rotate the device with force.
- Take the battery out of the remote control when the device is going to be stored for a long time.

Warnings:

- Please read and follow these instructions, and keep this manual in a safe place.
- Handle the unit with care.
- Clean the unit with a soft, dry cloth.
- Use only parts provided by the manufacturer.
- Make sure everything is secure before proceeding.
- Make sure the item is intact and that there are no missing parts.
- Do not exceed the maximum load capacity.
- All photos are for illustrative purposes only.

Limited One-year Warranty:

Sevenoak provides a limited warranty that this product is free from defects in materials and workmanship to the original purchaser under normal use for a period of one (1) year from the original purchase date or thirty (30) days after replacement (the "Warranty Period"), whichever occurs later. Our responsibility with respect to this limited warranty shall be limited solely to repair or replacement, at its option, of any product which fails during normal consumer use.

To obtain warranty coverage during the Warranty period, contact your place of purchase ("Seller") to obtain a return merchandise authorization ("RMA") number, and return to Seller the defective product along with proof of purchase and the RMA number.

This warranty does not extend to damage or failure which results from misuse, neglect, accident, alteration, abuse, improper installation or maintenance. Except as provided herein, sevenoak makes neither any express warranties nor any implied warranties, including but not limited to any implied warranty of merchantability or fitness for a particular purpose. This warranty provides you with specific legal rights, and you may also have additional rights which vary from state to state.

Importer: XXXX
Address: XXXX

CAUTION:
RISK OF EXPLOSION IF BATTERY IS REPLACED BY AN INCORRECT TYPE.
DISPOSE OF USED BATTERIES ACCORDING TO THE INSTRUCTIONS

© 2016 Sevenoak Inc. Visit us on the web at www.sevenoak.biz