



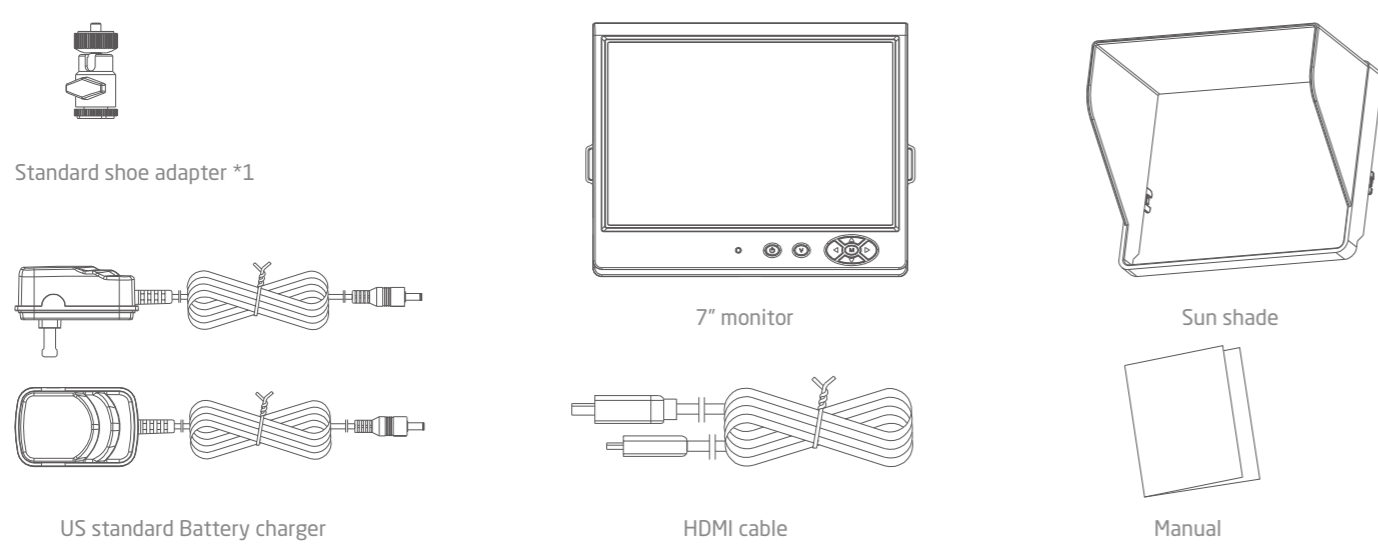
SK-LM7
7" On-camera monitor

Before using the product, please read this manual carefully. Keep this manual safely in case you need to check during your usage. Operate this product on base of your full understand of this manual.

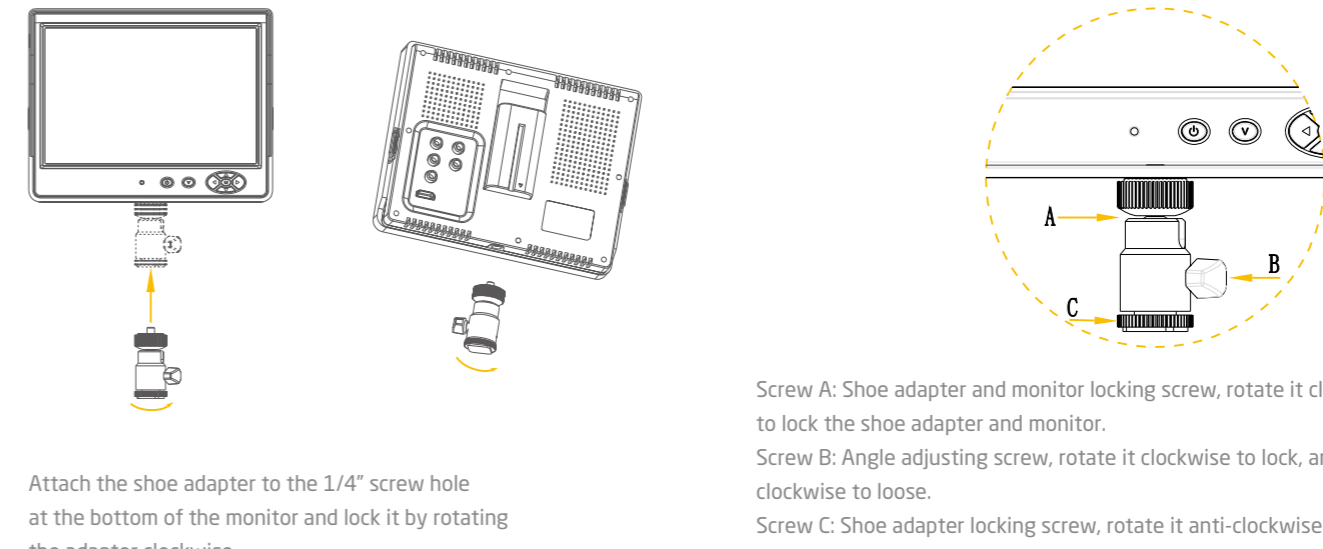
Specifications subject to change without notice. For more information, please visit www.sevenoak.biz

© 2016 Sevenoak Inc. Visit us on the web at www.sevenoak.biz

Components



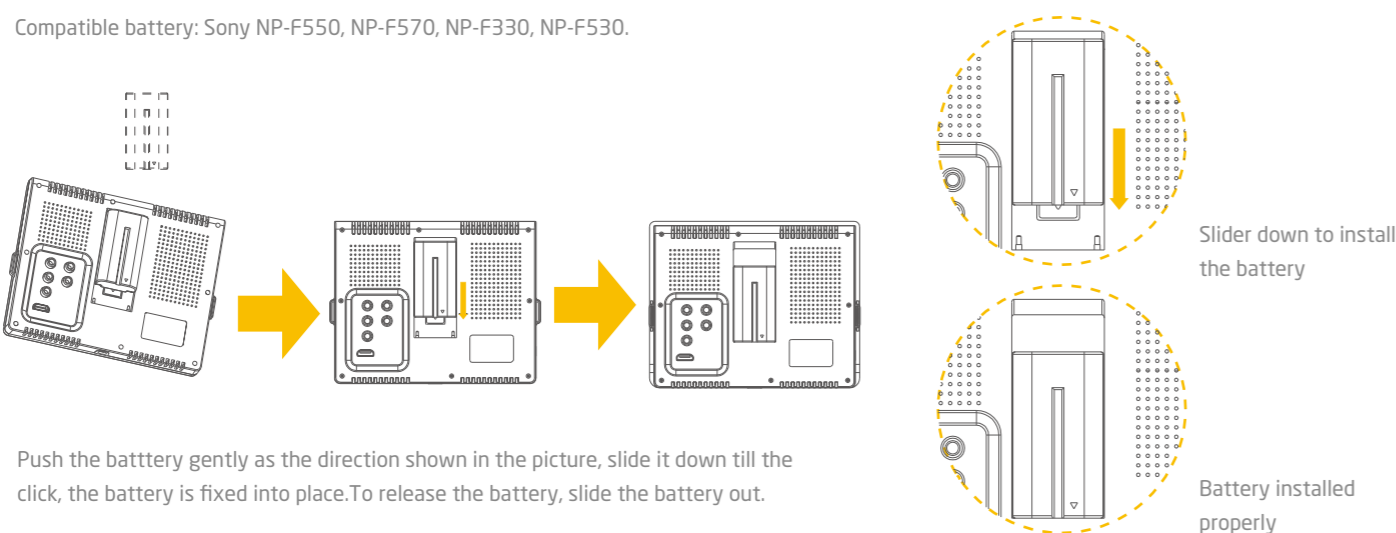
Install the shoe adapter



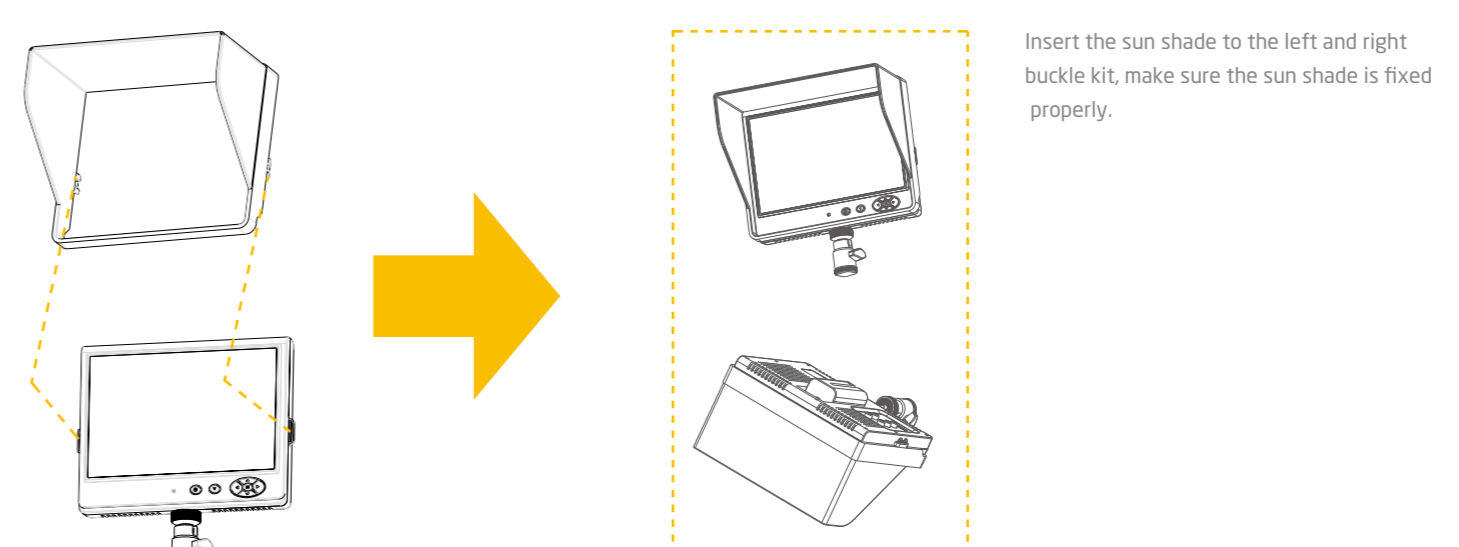
Screw A: Shoe adapter and monitor locking screw, rotate it clockwise to lock the shoe adapter and monitor.
Screw B: Angle adjusting screw, rotate it clockwise to lock, anti-clockwise to loose.
Screw C: Shoe adapter locking screw, rotate it anti-clockwise to lock and clockwise to loose.

Install the battery

Compatible battery: Sony NP-F550, NP-F570, NP-F330, NP-F530.

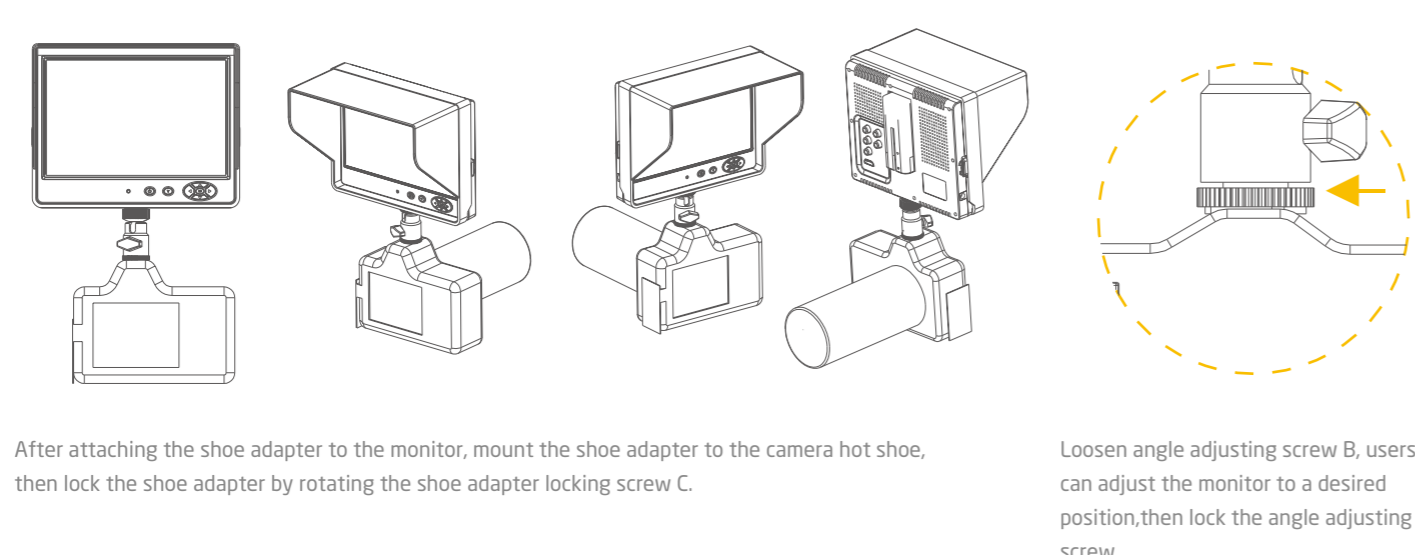


Install the sun shade



Insert the sun shade to the left and right buckle kit, make sure the sun shade is fixed properly.

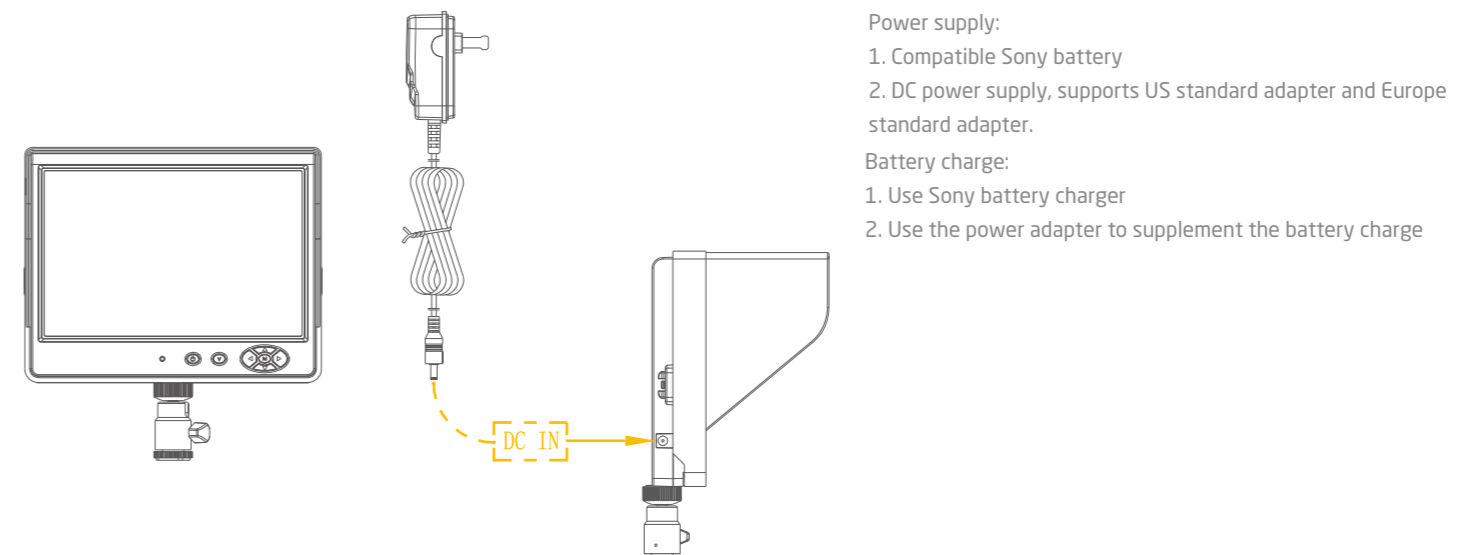
Attaching to the camera



After attaching the shoe adapter to the monitor, mount the shoe adapter to the camera hot shoe, then lock the shoe adapter by rotating the shoe adapter locking screw C.

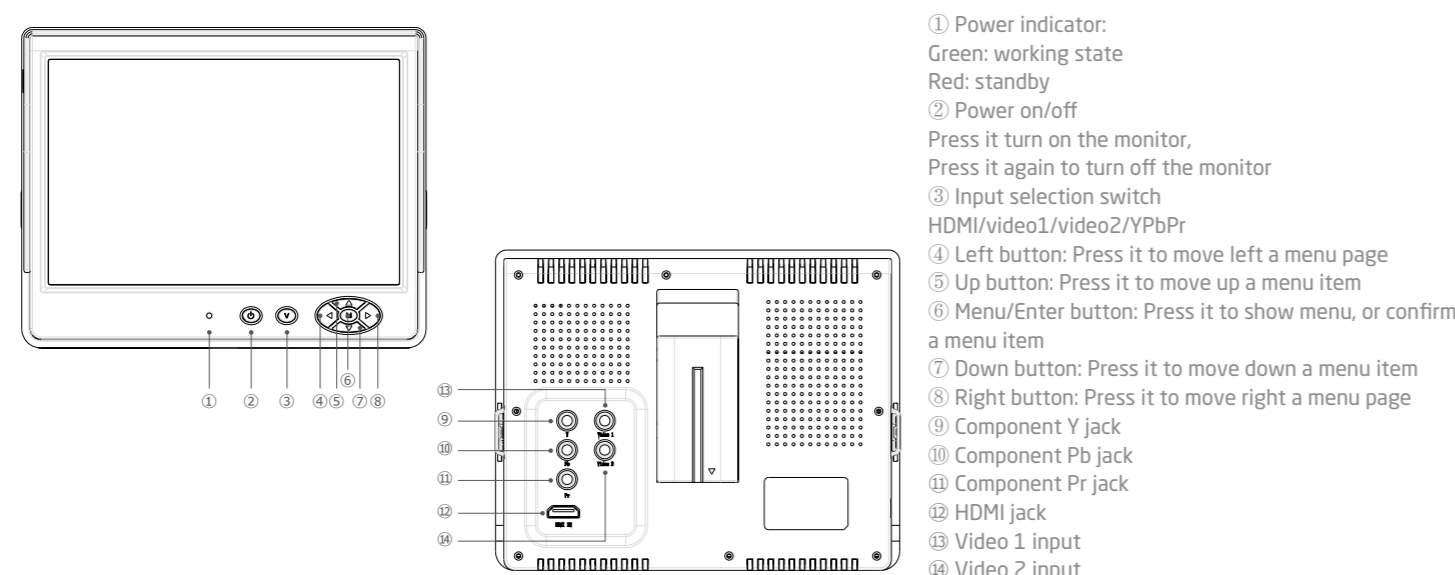
Loosen angle adjusting screw B, users can adjust the monitor to a desired position, then lock the angle adjusting screw.

Power supply



Power supply:
1. Compatible Sony battery
2. DC power supply, supports US standard adapter and Europe standard adapter.
Battery charge:
1. Use Sony battery charger
2. Use the power adapter to supplement the battery charge

Identifying the parts



- ① Power indicator:
Green: working state
Red: standby
- ② Power on/off
Press it turn on the monitor,
Press it again to turn off the monitor
- ③ Input selection switch
HDMI/video1/video2/Y/PbPr
- ④ Left button: Press it to move left a menu page
- ⑤ Up button: Press it to move up a menu item
- ⑥ Menu/Enter button: Press it to show menu, or confirm a menu item
- ⑦ Down button: Press it to move down a menu item
- ⑧ Right button: Press it to move right a menu page
- ⑨ Component Y jack
- ⑩ Component Pb jack
- ⑪ Component Pr jack
- ⑫ HDMI jack
- ⑬ Video 1 input
- ⑭ Video 2 input

Limited One-year Warranty

Sevenoak provides a limited warranty that this product is free from defects in materials and workmanship to the original purchaser under normal use for a period of one (1) year from the original purchase date or thirty (30) days after replacement (the "Warranty Period"), whichever occurs later. Our responsibility with respect to this limited warranty shall be limited solely to repair or replacement, at its option, of any product which fails during normal consumer use.
To obtain warranty coverage during the Warranty period, contact your place of purchase ("Seller") to obtain a return merchandise authorization ("RMA") number, and return to Seller the defective product along with proof of purchase and the RMA number.
This warranty does not extend to damage or failure which results from misuse, neglect, accident, alternation, abuse, improper installation or maintenance. EXCEPT AS PROVIDED HEREIN, SEVENOAK MAKES NEITHER ANY EXPRESS WARRANTIES NOR ANY IMPLIED WARRANTIES, INCLUDING BUT NOT LIMITED TO ANY IMPLIED WARRANTY OF MERCHANTABILITY OR FITNESS FOR A PARTICULAR PURPOSE. This warranty provides you with specific legal rights, and you may also have additional rights which vary from state to state.

Warnings

- Please read and follow these instructions, and keep this manual in a safe place.
- Handle the unit with care.
- Clean the unit with a soft, dry cloth.
- Use only parts provided by the manufacturer.
- Make sure everything is secure before proceeding.
- Make sure the item is intact and that there are no missing parts.
- All photos are for illustrative purposes only.

On/off

Install the battery/DC power supply, the LED indicator turns to Red. Press **⏻** button, the monitor is power-on, the LED indicator turns to green. Press the power switch for 2 seconds **⏻**, the LED indicator turns to Red, the monitor is power-off.

Select input signal

When the monitor is on, press the input signal selection button, enter into the input signal selection menu: Y/PbPr, HDMI, Video 1 or Video 2. Press up/down button to select the input signal, then press **⏻** button to confirm.

Menu operating instruction

Before setting the menu functions, please make sure the device is connected correctly. Turn the power (lower right corner of the unit) dial to ON position. The monitor enters into working state. After enter into working state, press the **⏻** button on the unit, according to select input video signal to switch "Y/PbPr, HDMI, Video 1, Video 2" (under NO menu state, using the shortcut button on the panel to operate). Press **⏻** button on the unit, then enter into OSD menu operation. Press **⏻** or **⏪** to move left or right a menu page (Picture/Sound/Time/Options).

Menu operating instruction

After selecting a menu page, press **⏪** or **⏩** to select menu item, press **⏻** to enter into submenu, using **⏪** or **⏩** to Change the value of the selected menu item, then press **M** to confirm. If you need to exit OSD menu, press **⏻** button again.

Picture

1. Picture Mode: Standard (default), Mild, User, Dynamic
2. Color Temperature: Medium (default), Warm, User, Cool
3. Aspect Ratio: Auto (default), 4:3, 16:9, Zoom1, Zoom2, Just scan (Panorama)
4. Noise Reduction: Off, low, Middle, High, Default (default)
5. Back light: 0-100

Sound

Not applicable

Menu operating instruction

Time

1. Clock: Date, Month, Year, Hour, Minute
2. Off time: Off (default), Once, Every day, Monday to Friday, Monday to Saturday, Saturday to Sunday, Sunday
3. On time: Off (default), Once, Every day, Monday to Friday, Monday to Saturday, Saturday to Sunday, Sunday
4. Sleep time: Off (default), 10min, 20min, 30min, 60min, 90min, 120min, 180min, 240min
5. Auto sleep: On, Off (default)

Option

1. OSD language: Multi-language is optional. Default is English
 2. Color range: 0-255 (Default), 16-235
 3. Blending low: Off, Low, Middle, High (default)
 4. OSD duration: Off, 5sec, 10sec, 15sec
- Other options are not applicable in this product.

Specifications

Model No.	SK-LM7	Power supply	Lithium battery or DC adapter
Screen	7" IPS TFT-LCD	Language	Multilanguage
Aspect ratio	16:9/4:3/etc	Input power voltage range	DV 9V
Resolution (WVGA)	800*480	Total current	250mA
Brightness	400cd/ m ²	Power consumption	3W
Viewing Angle	50/70/70/70	Input signal	HDMI, Y/PbPr, Video1 - Video2
Weight	400g	Size (LWH)	192mm*150mm*25mm

jiayz 深圳市长丰影像器材有限公司

产品/零件名称	SK-LM7说明书	比例	1 : 1	版本	V01
工程图号	SK-LM7说明书V01	物料描述	105g双铜骑马钉、12p、四色印		
物料编号	1F14015SK0071	尺寸/用量	尺寸: 215x100mm	1PCS	
制图人/日期	吴蒙蒙/2016-11-10	审核/日期			